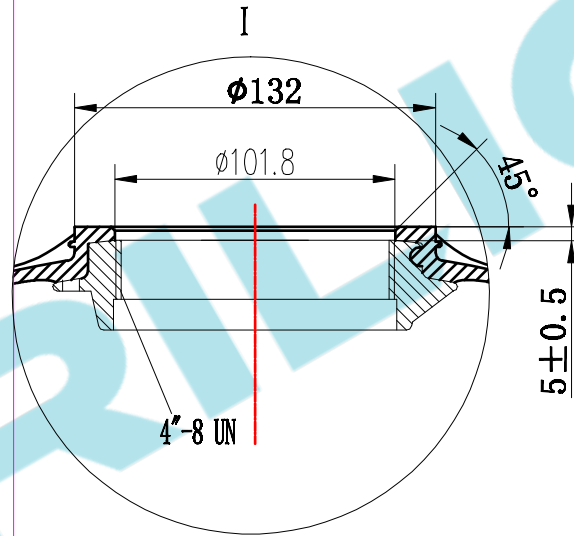


### TECHNICAL SPECIFICATION

MODEL	OPENINGS	VOLUME (Ltrs.)	MODE VOLUME (Ltrs.)	DIMENSIONS (mm)				BASE	WEIGHT OF VESSEL WITH BASE (Kg)
				"D1"	"D"	"H"±6	"F"		
14X47	4" TOP	99.7	13.6	360	363	1197	100	Standard	11.3
14X52	4" TOP	111.6	13.6	360	363	1325	100	Standard	11.9
14X65	4" TOP	142.4	13.6	360	363	1657	100	Standard	13.7



**4"-8UN Internal Thread**

PITCH DIA	3.918-3.930"
MINOR DIA	3.865-3.875"
MAJOR DIA	4-4.010"

**NOTES:**

- TANK MUST MEET ALL APPLICABLE SPECIFICATIONS OF NSF/ANSI 044 STANDARD, LATEST REVISION.
- OPERATING SPECIFICATIONS:
  - A. MAXIMUM WORKING PRESSURE: 10.5BAR(150PSI)
  - B. TEMPERATURE RANGE: 1-50°C (34-122°F)
  - C. MAXIMUM VACUUM: 17kpa (5" Hg)

SIGNATURE					
	NAME	DATE			
DESIGN			SCALE 1: 8	MODEL: 14" (4" TOP)	
INSPECTION			QUANTITY	DESCRIPTION FRP	
APPROVAL				PRESSURE VESSEL	
THIS DRAWING CAN NOT BE COPIED AND/OR USED WITHOUT PRIOR WRITTEN APPROVAL OF NOYI			PROJECTION	COMPUTER CODE	VERSION NO.
			DO NOT MEASURE THE DIMENSIONS.	DRAWING NO. NY-TE-DR-SA-IEV-14	TOTAL PAGE: 1 OF 1